

# Quick Setup Guide

S3

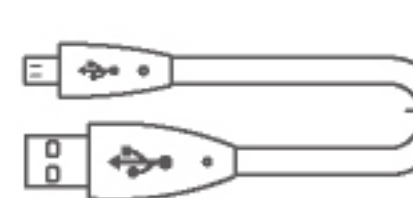


## Overview

After opening package, please check contents as below.

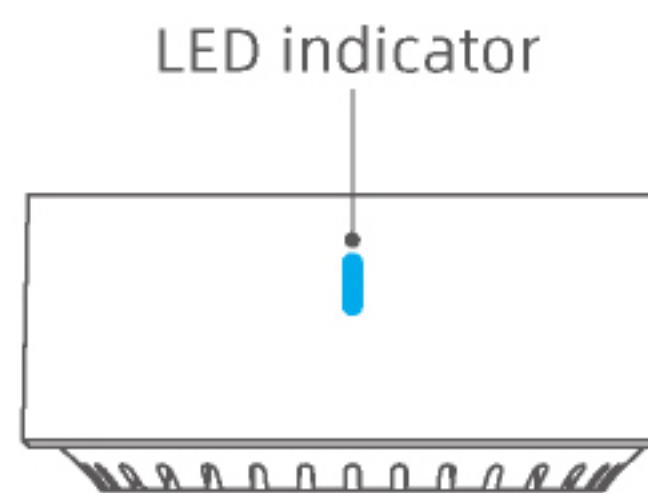


S3 hub

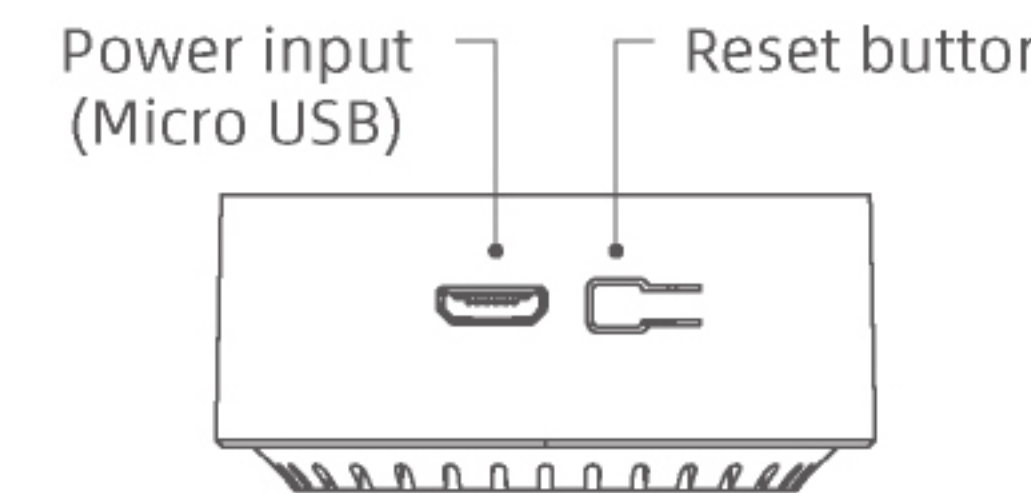


USB cable

**NOTE** Power adapter is not included. You can use any Micro USB cable with 5V power supply not less than 0.5A to power the device.



Front  
size: 45.9 x 45.9 x 20.6mm



Back

## Indications

Status	Indication
Flashes quickly (5 times/sec)	Device is in Smart Setup mode (waiting to be added).
Flashes intermittently	Device is in AP Setup mode (waiting to be added)
Flashes slowly then off	Device is being set up and added to network
Flashes slowly continuously	Device is failed to connect to network or disconnected from network

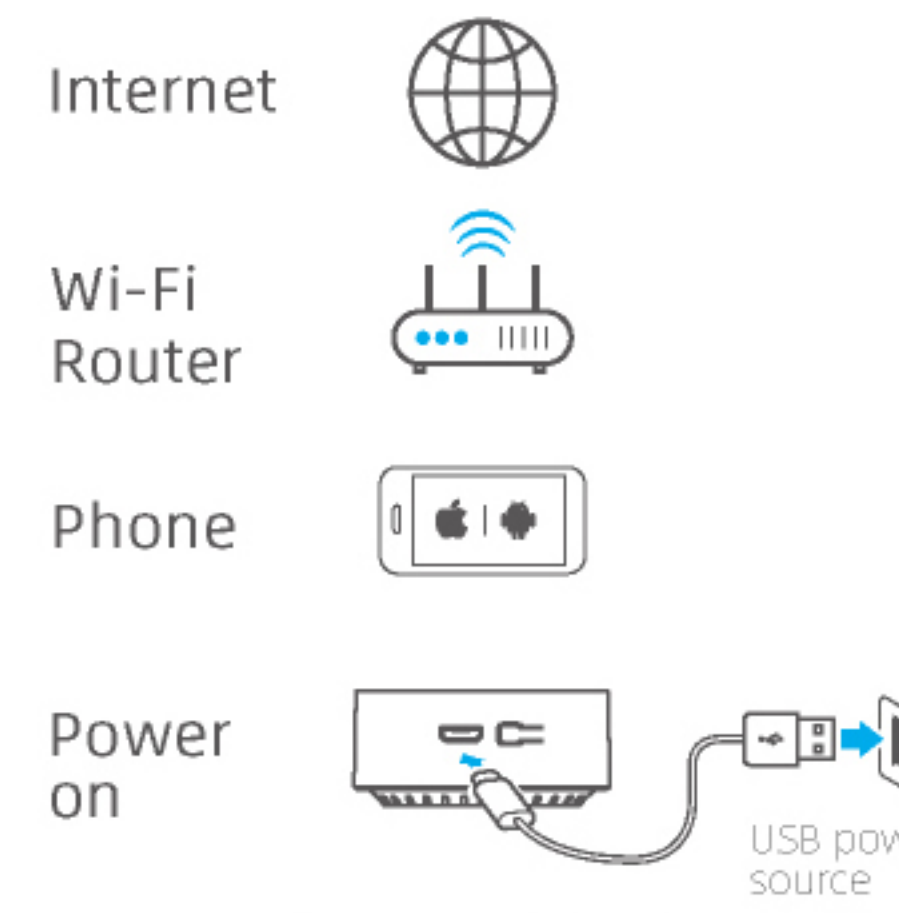
### Reset for AP Setup

When the device is in any conditions, press and hold the reset button for 5s until the LED flashes intermittently. DO NOT hold longer than 10s, otherwise it will go to Smart Setup mode.

### Reset for Smart Setup

When the device is in any conditions, press and hold the reset button for 10s until the LED flashes quickly.

## STEP 1 What's required



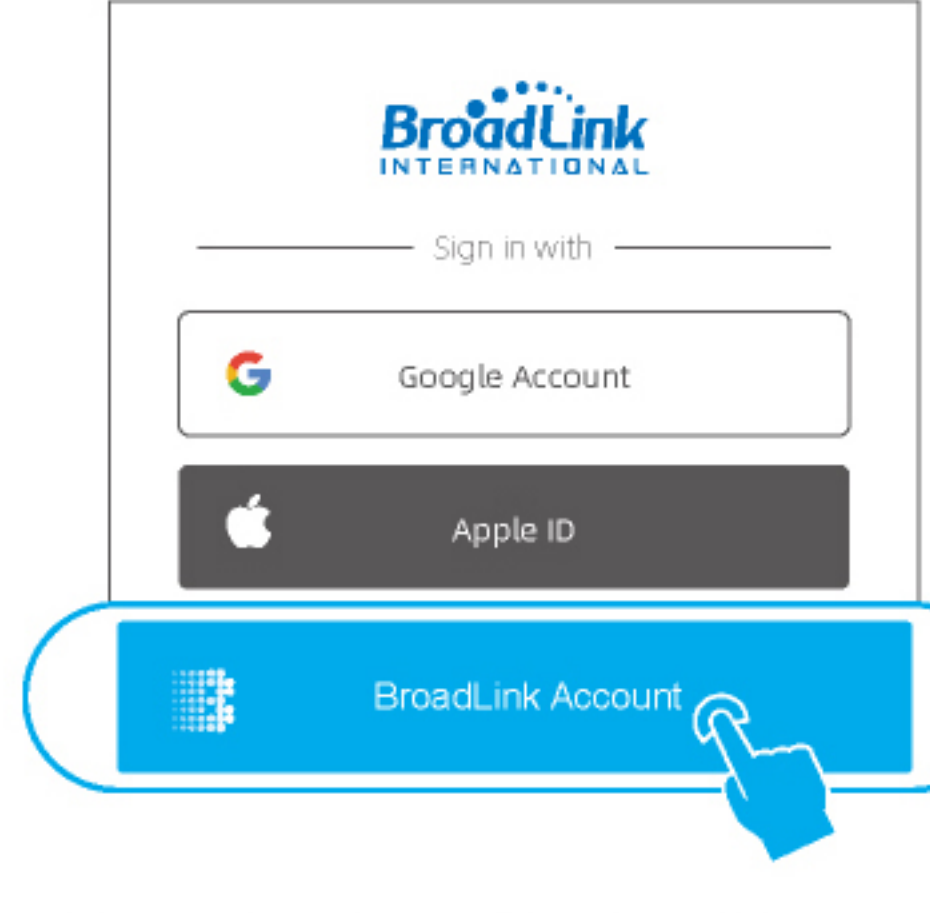
- A smartphone or tablet running iOS 9.0 / Android™ 4.1 or higher.
- A 2.4GHz Wi-Fi network with Internet connection.
- Power on the device and make sure the LED indicator is flashing intermittently.

## STEP 2 Get the APP



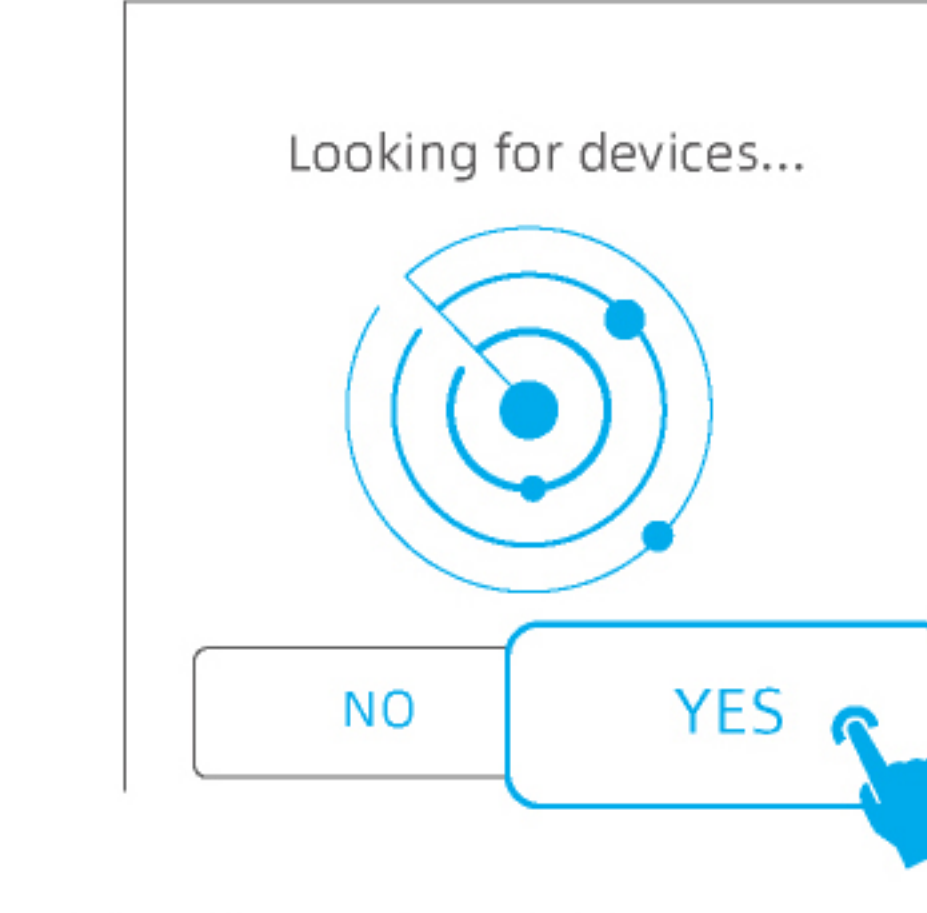
- Connect your smartphone to your home Wi-Fi network (2.4GHz only).
- Download the latest "BroadLink" APP from APP Store, Google Play and install it on your smart phone.

## STEP 3 Sign in APP



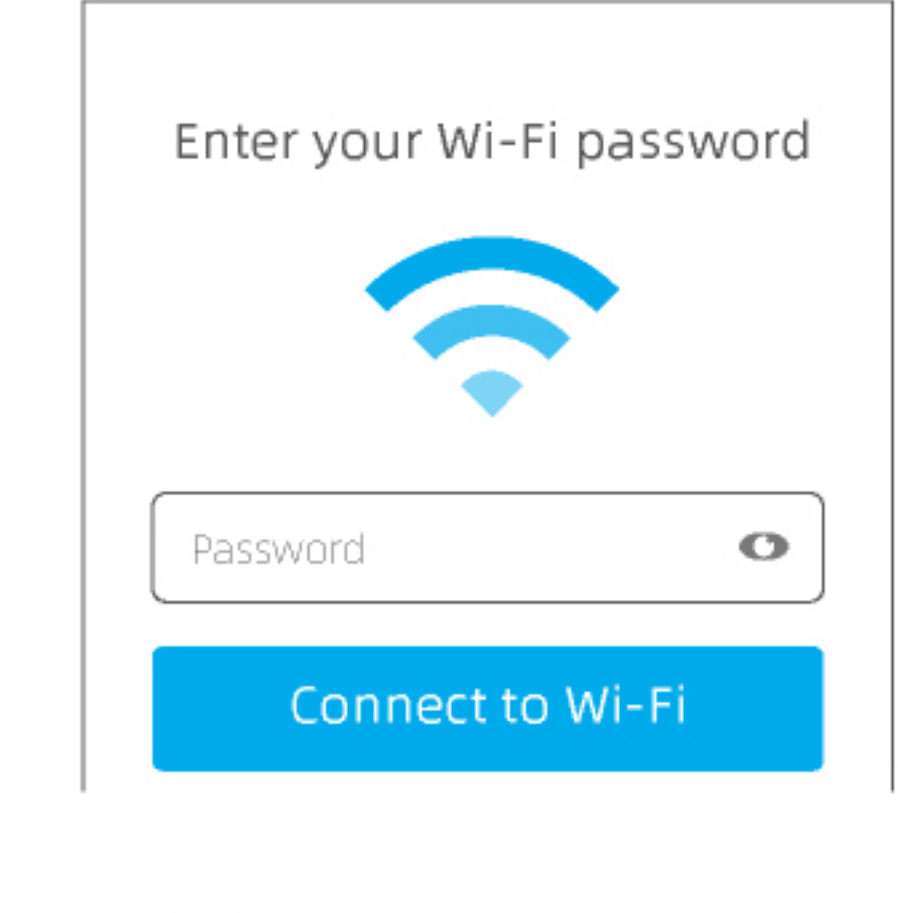
- Open the BroadLink APP, tap "BroadLink account" and sign in to your cloud account.
- If you don't have an account, tap the "Sign up" to create a new account.
- Link your account with Apple ID or Google account for quick sign-in next time (optional).

## STEP 4 Add device in APP



- Tap "+" on top right corner and choose "Add device".
- Select "YES" to get to next step.
- The APP will start to scan and look for your device SSID "BroadLink\_WiFi\_Device" automatically, it may take up to 1 minute.

## STEP 5 Connect device to Wi-Fi network



- Choose your home Wi-Fi network, input password and tap "Connect to Wi-Fi", the LED indicator will be flashing slower and then off. The device is successfully connected.
- Choose the room and name the device.

## Important notices

- For indoor use in dry environment only.
- Use UL listed power adapters with adequate output, otherwise the device may not work properly.

